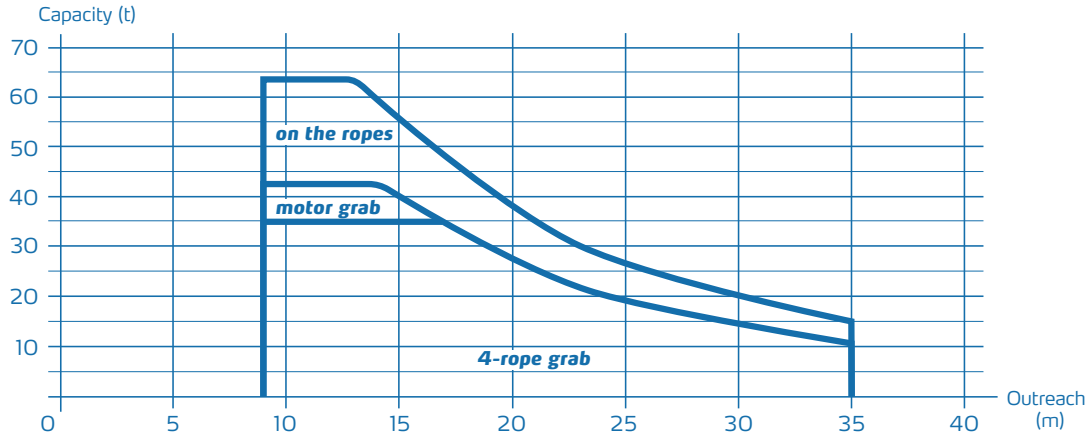


Liebherr LHM 180

Bulk operation



Maximum crane capacity 64t			
Outreach (m)	Hook operation on the ropes (t)	Grab operation	
		4-rope grab (t)	motor grab (t)
9-12	64.0	35.0	42.0
13	63.5	35.0	42.0
14	58.9	35.0	41.9
15	54.7	35.0	38.9
16	50.6	35.0	36.0
17	46.9	33.3	33.3
18	43.5	30.9	30.9
19	40.2	28.6	28.6
20	37.1	26.4	26.4
21	34.9	24.8	24.8
22	32.3	23.0	23.0
23	30.4	21.6	21.6
24	28.4	20.2	20.2
25	26.8	19.0	19.0
26	25.1	17.8	17.8
27	23.8	16.9	16.9
28	22.3	15.9	15.9
29	21.2	15.1	15.1
30	20.0	14.2	14.2
31	19.0	13.5	13.5
32	18.0	12.8	12.8
33	17.1	12.2	12.2
34	16.2	11.5	11.5
35	15.3	10.9	10.9

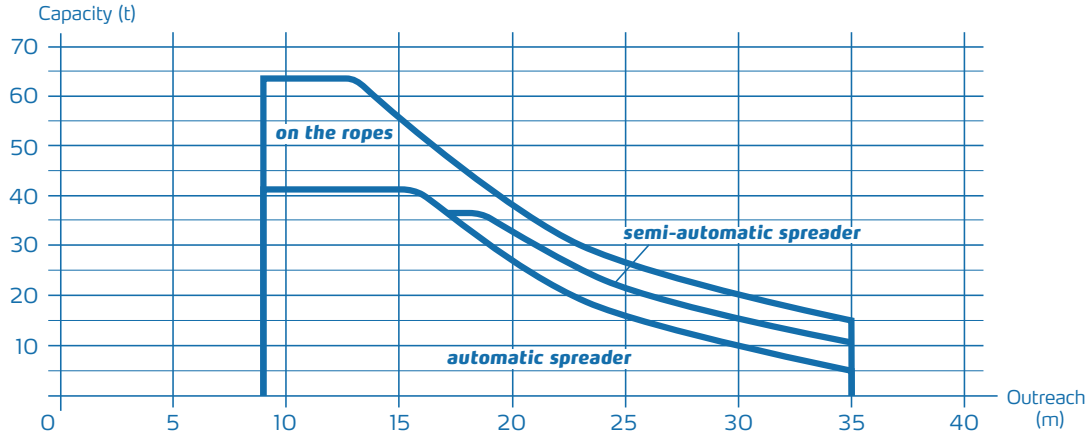
Weight ramshorn hook 2.2 t
Weight rotator 2.2 t

Maximum crane capacity 42t			
Outreach (m)	Hook operation on the ropes (t)	Grab operation	
		4-rope grab (t)	motor grab (t)
9-12	42.0	24.0	30.0
13	42.0	24.0	30.0
14	42.0	24.0	30.0
15	42.0	24.0	30.0
16	42.0	24.0	30.0
17	42.0	24.0	30.0
18	42.0	24.0	30.0
19	40.2	24.0	28.6
20	37.1	24.0	26.4
21	34.9	24.0	24.8
22	32.3	23.0	23.0
23	30.4	21.6	21.6
24	28.4	20.2	20.2
25	26.8	19.0	19.0
26	25.1	17.8	17.8
27	23.8	16.9	16.9
28	22.3	15.9	15.9
29	21.2	15.1	15.1
30	20.0	14.2	14.2
31	19.0	13.5	13.5
32	18.0	12.8	12.8
33	17.1	12.2	12.2
34	16.2	11.5	11.5
35	15.3	10.9	10.9

Weight ramshorn hook 1.3 t
Weight rotator 1.5 t

Liebherr LHM 180

Container operation



Maximum crane capacity 64t			
Outreach (m)	Hook operation on the ropes (t)	Capacity under 40' spreader automatic (t)	Capacity under 40' spreader semi-automatic (t)
9	64.0	41.0	36.0
10	64.0	41.0	36.0
11	64.0	41.0	36.0
12	64.0	41.0	36.0
13	63.5	41.0	36.0
14	58.9	41.0	36.0
15	54.7	41.0	36.0
16	50.6	39.4	36.0
17	46.9	35.7	36.0
18	43.5	32.3	36.0
19	40.2	29.0	35.4
20	37.1	25.9	32.3
21	34.9	23.7	30.1
22	32.3	21.1	27.5
23	30.4	19.2	25.6
24	28.4	17.2	23.6
25	26.8	15.6	22.0
26	25.1	13.9	20.3
27	23.8	12.6	19.0
28	22.3	11.1	17.5
30	20.0	8.8	15.2
32	18.0	6.8	13.2
34	16.2	5.0	11.4
35	15.3	4.1	10.5

Weight rotator 2.2 t
 Weight fully automatic (telescopic) spreader 9 t
 Weight semi-automatic spreader 1.3 t (20 ft), 2.6 t (40 ft)

Maximum crane capacity 42t			
Outreach (m)	Hook operation on the ropes (t)	Capacity under 40' spreader automatic (t)	Capacity under 40' spreader semi-automatic (t)
9	42.0	31.5	36.0
10	42.0	31.5	36.0
11	42.0	31.5	36.0
12	42.0	31.5	36.0
13	42.0	31.5	36.0
14	42.0	31.5	36.0
15	42.0	31.5	36.0
16	42.0	31.5	36.0
17	42.0	31.5	36.0
18	42.0	31.5	36.0
19	40.2	29.7	36.0
20	37.1	26.6	33.0
21	34.9	24.4	30.8
22	32.3	21.8	28.2
23	30.4	19.9	26.3
24	28.4	17.9	24.3
25	26.8	16.3	22.7
26	25.1	14.6	21.0
27	23.8	13.3	19.7
28	22.3	11.8	18.2
30	20.0	9.5	15.9
32	18.0	7.5	13.9
34	16.2	5.7	12.1
35	15.3	4.8	11.2

Weight rotator 1.5 t
 Weight fully automatic (telescopic) spreader 9 t
 Weight semi-automatic spreader 1.3 t (20 ft), 2.6 t (40 ft)